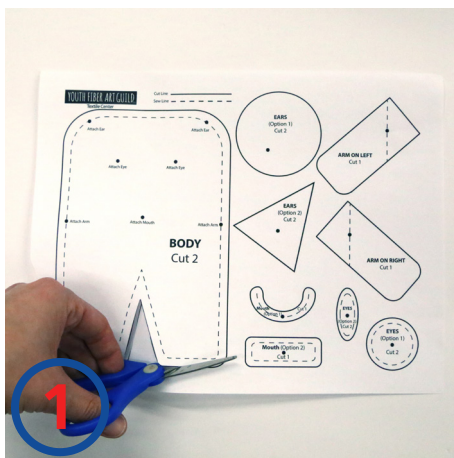
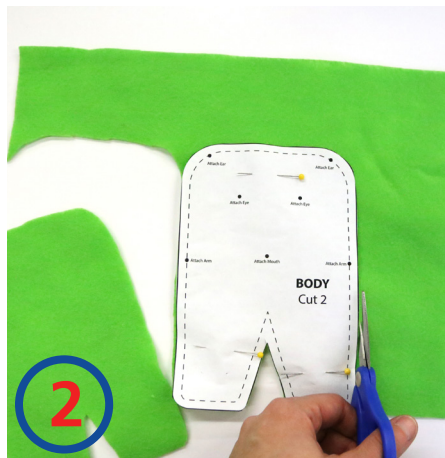


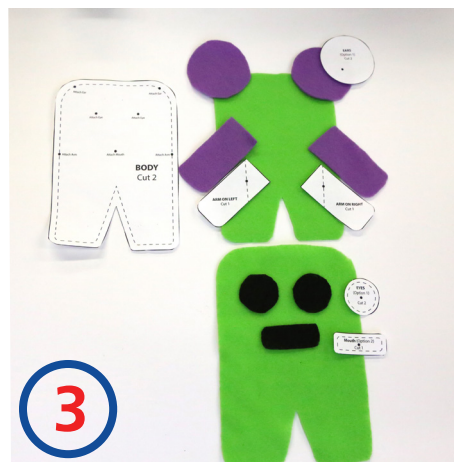
# CREATURE FEATURE



Look over your pattern. Each pattern piece has a description of the item and how many you'll need. Choose how you'll customize your pattern. Cut out all the pattern pieces you'll need by following the **cut line**. (Bold solid line.)



Starting with the body, pin it down to either green or purple and cut the shape of the body out two times. (One for the front and one for the back.) Then choose the color for your arms and ears. Cut them out the number of times stated on the pattern.

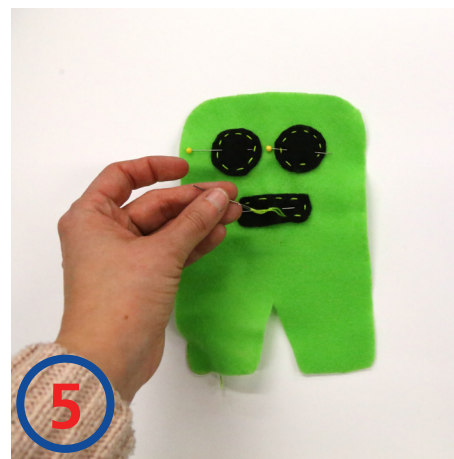


Next you'll choose which mouth and eyes to use. These will be cut out according to the pattern. Make sure to use your fabric wisely!

Now you should have all of your pattern pieces cut out. (2 bodys, 2 arms, 2 ears, 2 eyes, and 1 mouth.)



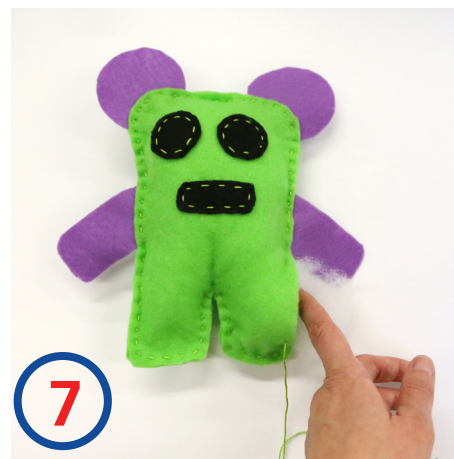
Pin your eyes and mouth down to one piece of your body. The **dots** on the pattern are to help you align the pieces properly. Use them as a guide.



Sew on your eyes and mouth to one side of the body using a running stitch following roughly where the **sewing line** (dotted line) is on the pattern.



Align each arm and ear between the front and back piece. Pin the 3 pieces together.



Sew around the edge of your fabric. Once you get 1.5 inches away from where you started, fill with poly fill.



Completely sew up your creature.

VOILA! You now have your very own customized creature!